



# FLEX SERIES

Turnkey AC Coupled C&I  
Battery Energy Storage Systems



- ≡ Liquid Cooled with Fire Suppression
- ≡ Scalable 2 Hour & 4 Hour Options
- ≡ Outdoor Freestanding Solution
- ≡ Integrated Power Control Software

WORLD CLASS BATTERY ENERGY STORAGE TECHNOLOGY

# SYSTEM COMPONENTS



Model: EVO-FLEX-125kW/250kWh-480V

# HARDWARE FEATURES



- o Lithium Iron Phosphate Chemistry
- o UL 9540 & UL 1741 Certified BESS
- o Liquid Cooled Battery Modules
- o Fire Suppression System Built-In
- o Utility-grade Value/Performance



- o Scalable Power & Energy
- o High Efficiency
- o 480 VAC 3 Phase Output (4 wire)
- o Backup Power - Coming Soon - Optional
- o Fast response for Frequency Regulation Applications

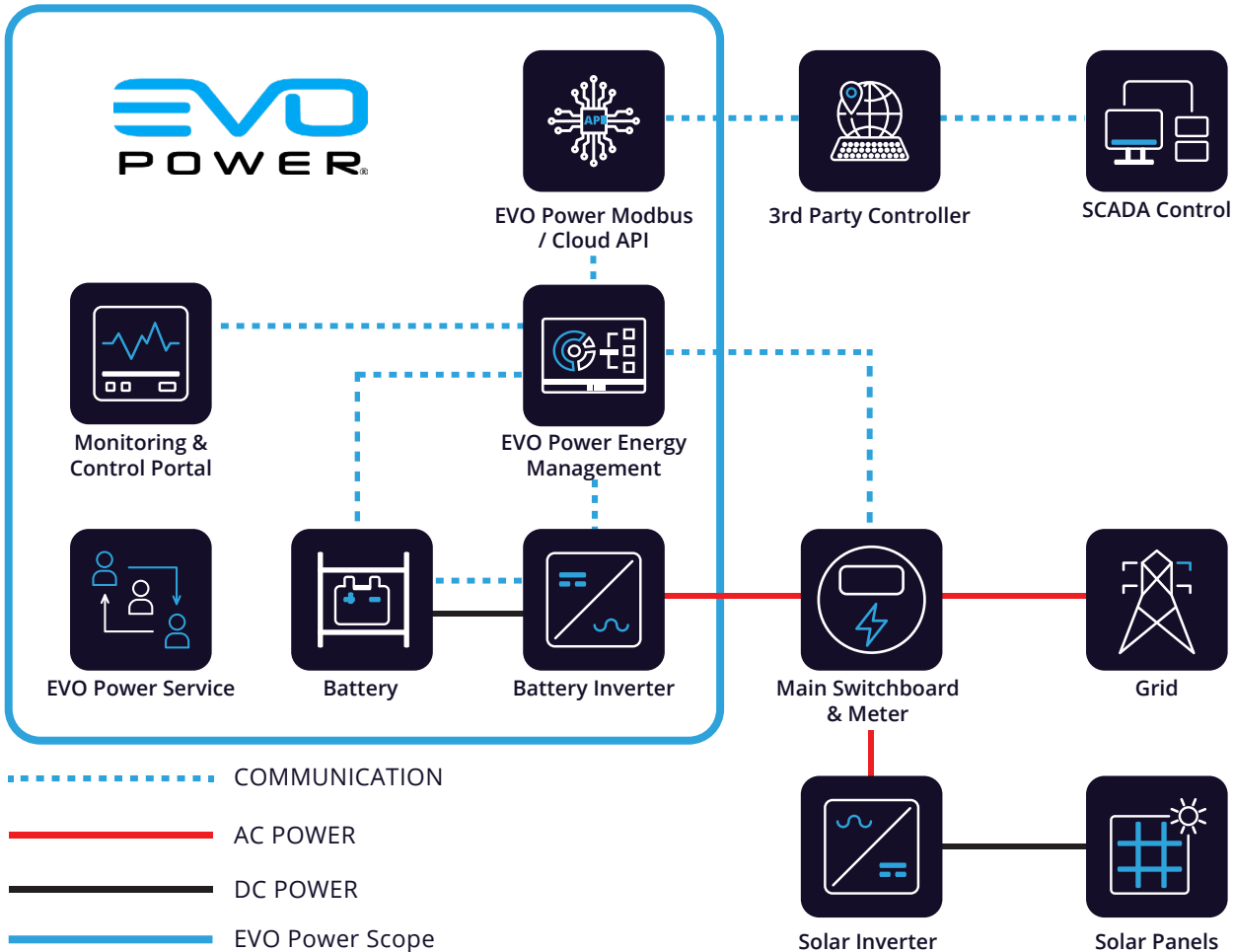


- o Advanced Power Control Software
- o EVO API for 3rd Party Control
- o EVO Advanced Monitoring Platform
- o Optional Monitoring of Compatible PV Systems



- o Outdoor Mounted Pod-Style Solution
- o Scalable & Flexible Layout Options
- o Built-in Aux. Power Supply reducing BOS
- o Pre-configured AC & DC Protection Devices
- o Full-Turnkey World Class BESS Solution

# SYSTEM SCHEMATICS



# POWER CONTROL APPLICATIONS



EVO Power Energy Management System

- ≡ Solar Self-Consumption
- ≡ Peak Shaving
- ≡ Retail Time-of-Use
- ≡ Utility Meter Reading Capability
- ≡ Optional Solar Inverter Control
- ≡ Optional Backup Power

## ≡ EVO Power Modbus / Cloud API for 3rd Party System Control for Orchestration of Grid Services

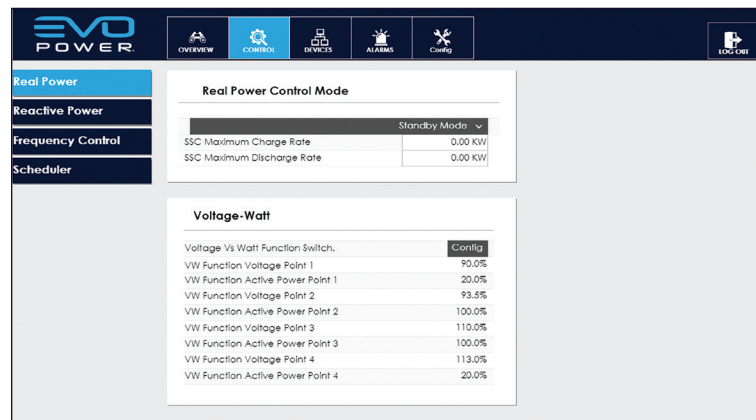
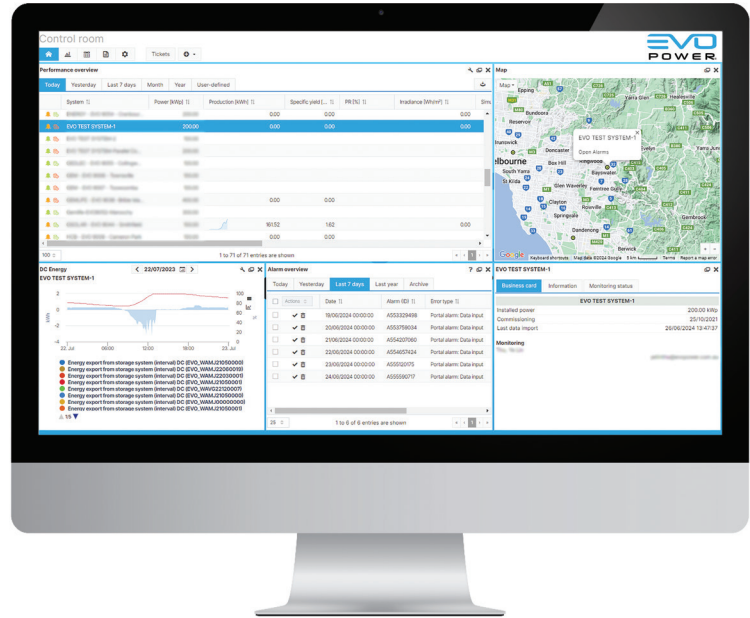


- Frequency Regulation / Grid Services
- Energy Arbitrage
- Virtual Power Plant
- Integration with other platforms

# EVO EMS (Energy Management System)

## EVO MONITORING PLATFORM

- ≡ Dashboard for a System-Specific Overview
- ≡ Individual Configuration of Alarm Criteria
- ≡ Mobile Monitoring with iOS and Android App
- ≡ Calendar for Coordinating Service Deployments
- ≡ Individual Reporting, CSV Export of all Measurement Data
- ≡ Fleet Review - Tabular Display of the Key Performance Indicators for all Systems

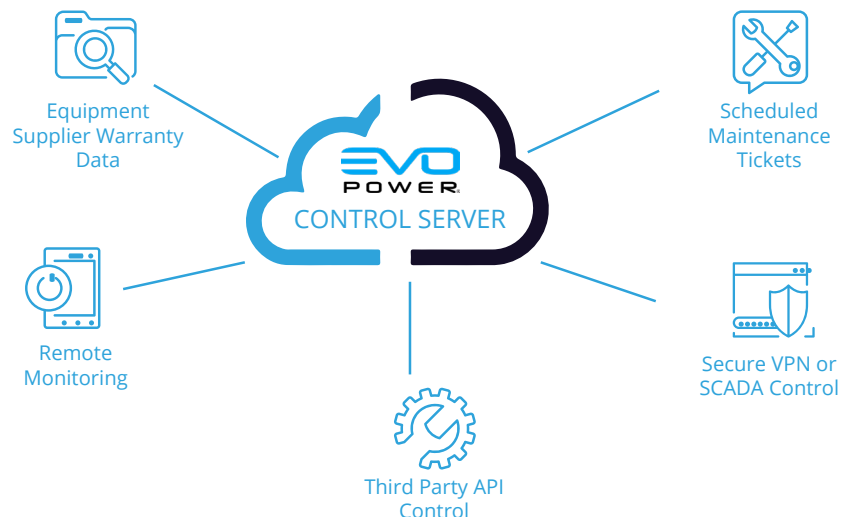


## EVO REMOTE CONTROL PLATFORM

- ≡ Graphical User Interface for Configuration
- ≡ Programmable Peak Shaving Fixed Value and Characteristic Curve Control
- ≡ Active Power and Reactive Power Control
- ≡ Ramp Rate Control

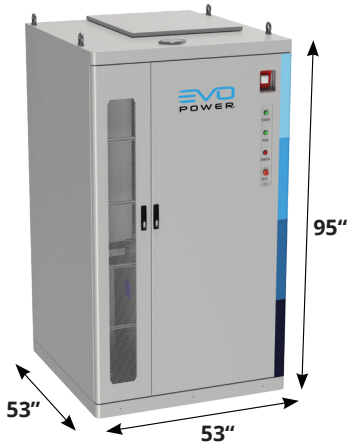
## EVO CONTROL SERVER PLATFORM

- ≡ Optional Control via Third Party Optimization / VPP Aggregator
- ≡ Agnostic API Control Commands
- ≡ Open Platform
- ≡ Optional Secure VPN or SCADA Control
- ≡ Single Asset or Fleet Management



# SCALABILITY CONFIGURATIONS

FLEX 125 kW / 250 kWh - 2hr  
or  
FLEX 62.5 kW / 250 kWh - 4hr



FLEX 250 kW / 500 kWh - 2hr  
or  
FLEX 125 kW / 500 kWh - 4hr



FLEX 375 kW / 750 kWh - 2hr  
or  
FLEX 187.5 kW / 750 kWh - 4hr

FLEX 500 kW / 1,000 kWh - 2hr  
or  
FLEX 250 kW / 1,000 kWh - 4hr



Note: Dimensions exclude product maintenance clearances. Client needs to follow regulatory installation guidelines.

# INDIVIDUAL UNIT SPECIFICATIONS

INVERTER	125 kW / 250 kWh – 2 hr	62.5 kW / 250 kWh – 4 hr
Rated AC Power	125 kW	62.5 kW
Rated Grid Voltage	480 VAC 3P 3W + PE, +N (optional)	
Grid Voltage Range	432 ~ 528 VAC	
Rated AC Current	151 A	
Total Harmonic Distortion	≤ 3%	
Nominal Grid Frequency	60 Hz	
Peak Efficiency	98%	
Power Factor	-1 to +1, continuously adjustable	
ENERGY STORAGE		
Usable AC Energy at BOL	250 kWh	
Nominal DC Energy at BOL	289 kWh	
Nominal Voltage	921.6 VDC	
Voltage Range	806 ~ 1,000 VDC	
Chemistry	Lithium Iron Phosphate	
ENVIRONMENTAL		
Operating Temperature Range	-4 °F ~ 122 °F   -20 °C ~ 50 °C *	
Storage Temperature Range	-22 °F ~ 140 °F   -30 °C ~ 60 °C	
Operating/Storage Humidity	0 ~ 95% RH, Non-Condensing	
IP Ratings	Battery Enclosure: IP 55   HVAC & Inverter: IP 54	
Airborne Noise	< 75 dBA @ 1 meter	
Maximum Altitude	9,842 ft   3,000 m	
COMPLIANCE		
Inverter Related Standards	UL 1741, UL 1741 SB, IEEE 1547:2018, FCC part 15 class A	
Battery Related Standards	UL 1973, UL 9540A, NFPA 855, NFPA 68, NFPA 69, UN 38.3	
System Related Standards	UL 9540	
DIMENSIONS [W x D x H]		
System Dimensions	53 x 53 x 95 in 1,350 x 1,350 x 2,400 mm	
WEIGHTS		
Weight	6,600 lb   3,000 kg	

\* Inverter derating above 113 °F / 45 °C

# SCALABLE OPTIONS

AC BESS PRODUCT	PART NUMBER	CHARGE / DISCHARGE POWER (AC KW)	USABLE ENERGY (BOL, AC KWH)	NOMINAL ENERGY (BOL, DC KWH)	# OF BESS
<b>2 Hour (0.5C) Systems</b>					
FLEX 125 kW / 250 kWh	EVO-US-1000	125	250	289	1
FLEX 250 kW / 500 kWh	EVO-US-1001	250	500	578	2
FLEX 500 kW / 1,000 kWh	EVO-US-1003	500	1,000	1,156	4
FLEX 1,000 kW / 2,000 kWh	EVO-US-1007	1,000	2,000	2,312	8
FLEX 1,500 kW / 3,000 kWh	EVO-US-1011	1,500	3,000	3,468	12
FLEX 2,000 kW / 4,000 kWh	EVO-US-1015	2,000	4,000	4,624	16
<b>4 Hour (0.25C) Systems</b>					
FLEX 62.5 kW / 250 kWh	EVO-US-1020	62.5	250	289	1
FLEX 125 kW / 500 kWh	EVO-US-1021	125	500	578	2
FLEX 250 kW / 1,000 kWh	EVO-US-1023	250	1,000	1,156	4
FLEX 500 kW / 2,000 kWh	EVO-US-1027	500	2,000	2,312	8
FLEX 1,000 kW / 4,000 kWh	EVO-US-1035	1,000	4,000	4,624	16

Other output values may be selected in increments of 125 kW (2 hr) or 62.5 kW (4 hr). Combinations of the same systems above can be controlled in parallel.


All the AC power ratings exclude the auxiliary power. All auxiliary circuits are powered by the PCS when in backup mode.



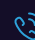
Please contact EVO Power for the detailed Warranty Statement.

Specifications may be updated without notice, please contact EVO Power sales for the latest datasheets.





 **EVO Power USA, Inc.**  
30452 Esperanza,  
Rancho Santa Margarita, CA, 92688

 [www.evopower.com](http://www.evopower.com)  
 [info.US@evopower.com](mailto:info.US@evopower.com)  
 +1 833 386 7693